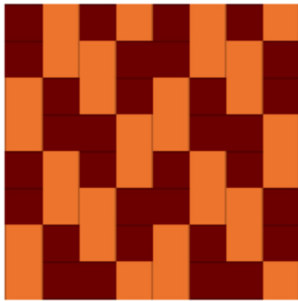


Broken Twill

4				4			
		3				3	
	2			2			
			1				1

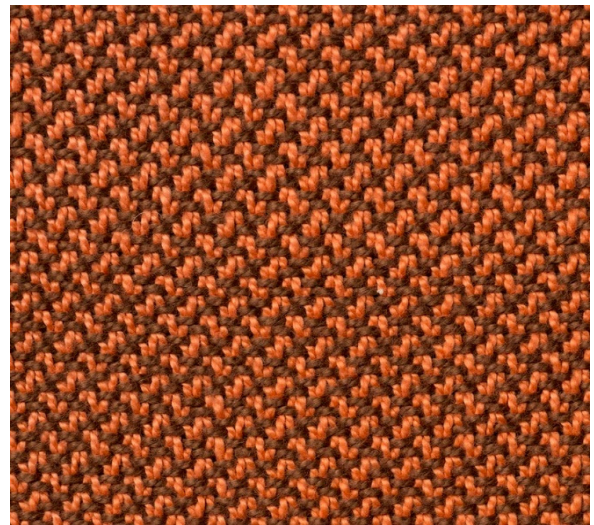
		4	4
	3	3	
2	2		
1			1



1			
	2		
		3	
			4
1			
	2		
		3	
			4

We can “break” the straight twill line by reversing any two shafts. I prefer the break to occur with shafts 2 and 3, as shown on the left to avoid floating selvages by preserving the starting shaft at 1 and the ending shaft at 4 (then enter the shuttle on the side of the warp where the first thread is down).

Below is the fabric woven with this draft.

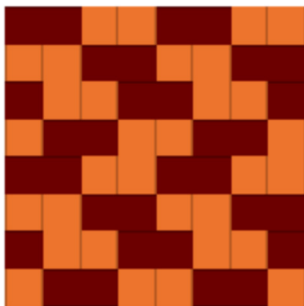


We can also obtain a broken twill by threading a straight draw and reversing the tie-up as shown in the drawdown below. The twill is broken, but the draft is turned.

Broken twills are particularly effective when we want the drape that a twill offers but don’t want or need a twill motif. A good example is when showcasing a multicolor yarn as in the fabric on the right.

4				4			
	3			3			
		2		2			
			1				1

		4	4
	3	3	
2		2	
1			1



1			
	2		
		3	
			4
1			
	2		
		3	
			4

